



# The smarter way to manage workplaces, through COVID-19 and beyond

How sensor technology can help your employees return to the office and support you to create better workplaces



# Rethinking the traditional workspace

The coronavirus pandemic has changed the way we work, and for many organisations some of these changes will be long term or even permanent. But even before the enforced lockdown, workplaces were already changing beyond the traditional ‘office space’ as flexible working became the norm.

Part-time hours, remote working and teams spread across multiple sites meant employers had to think creatively about how to best use space, both to save money and to enhance productivity and experience for their employees.

Corporate responsibility and an increased focus on sustainability, employee health and well-being, and energy savings also led to employers re-examining their working environment. Offices with a specific focus on wellbeing were becoming the norm, as organisations sought to achieve a CSR-based brand image, meaning these premises were attracting the best talent, tenants and customers.

So, where are we now? Clearly trends which had begun to emerge before the pandemic have been swiftly accelerated. There has been a seismic shift in thinking, both from employers and employees. Organisations can see the productivity levels of their staff working from home, allaying any fears about remote working reducing output. Employees are realising that ‘presenteeism’ is not always necessary.

But while remote working may continue for some, a phased return to work may be necessary for others. A ‘mix-and-match’ approach to home and office working can ensure social distancing practices are still met, while offering teams the chance to safely meet in person as well as via video conferencing.

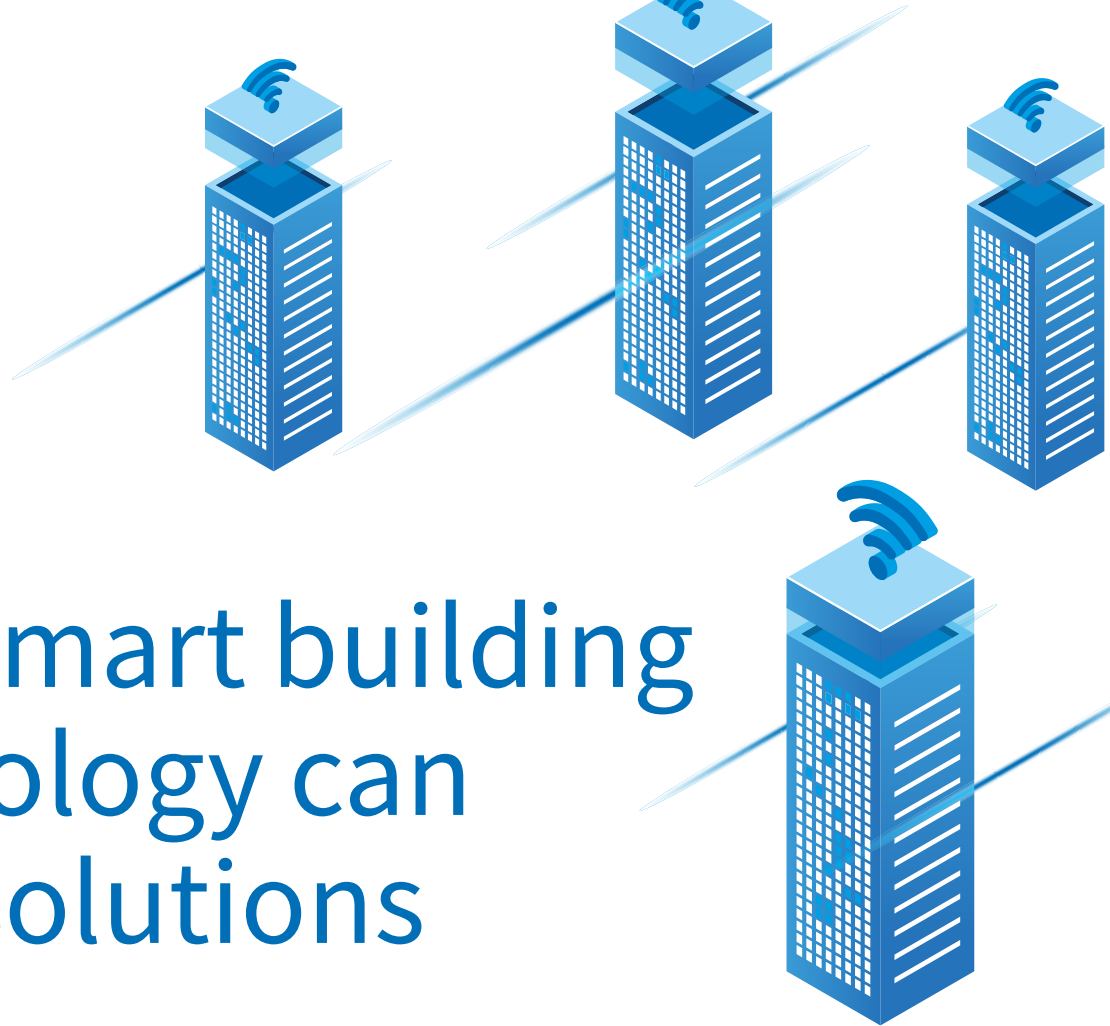


# The new challenge

The challenge now facing workplace and facilities managers is getting the balance right in their buildings. With no precedent to model their strategy around, how do they ensure health, safety and wellbeing of staff, while still maximising productivity and output?

First and foremost, it's about how many people can safely work in a building while still managing safe distancing. From there, work patterns and shift work can be considered – such as some days in the office, other days working from home. Managers also need to look at whether workspaces need adapting, how equipment can be safely used, and what extra cleaning regimes they need to introduce. Lots to consider.

And they need to address these issues not just for the short term while we're in the midst of the pandemic. Some of these working practices will be here to stay, so it's key to consider the long-term implications of any decision making.



# How smart building technology can offer solutions

Pre-pandemic, many organisations were already looking at how they could turn their premises into ‘smart buildings’, using IoT sensors to feed back real-time data in terms of building utilisation, people occupancy, air quality, asset management and energy use. Now, more than ever, this smart building technology will come to the fore and remain an essential, and permanent, fixture.

Smart sensor technology will enable organisations to manage their offices safely by accurately monitoring desk, room and space occupancy, helping managers to plan resourcing effectively. It can also aid air quality control, monitoring ventilation and air conditioning to optimise the working environment.

Cleaning is clearly a big factor with return to work, and understanding which areas have been used can help facilitate robust cleaning rotas after meetings, for example.

Sensors are also extremely discreet. As understandably nervous employees make their way back to the workplace, keeping things as normal as possible for them is key. Once the sensors are in place you can’t see them, even though they work incredibly hard behind the scenes.

Looking to the long term, smart offices make for healthier workplaces. A comfortable physical environment leads to better productivity and higher morale, so managing lighting, temperature, air quality and occupancy to best effect results in happier occupants. In fact, in a survey by Savills UK, cleanliness, comfort, lighting and air quality were cited by employees as some of the most important factors in their ideal workplace.

Smart sensor technology can also lead to improved automation and control, enabling organisations to optimise their environments and energy use accordingly. With sustainability already a watchword, identifying waste can lead to significant energy savings and reduce costs and overheads.

For businesses, as well as a happier, healthier workforce, there are commercial and CSR-based benefits to be reaped, too.

Investments made during the pandemic can be knee-jerk, unsustainable and costly. Wireless sensor technology is the perfect way to help you get the balance right in your workspace, reassuring your employees that you are actively considering their health and wellbeing, and will ensure your post-Covid building is operating as sustainably and efficiently as possible.







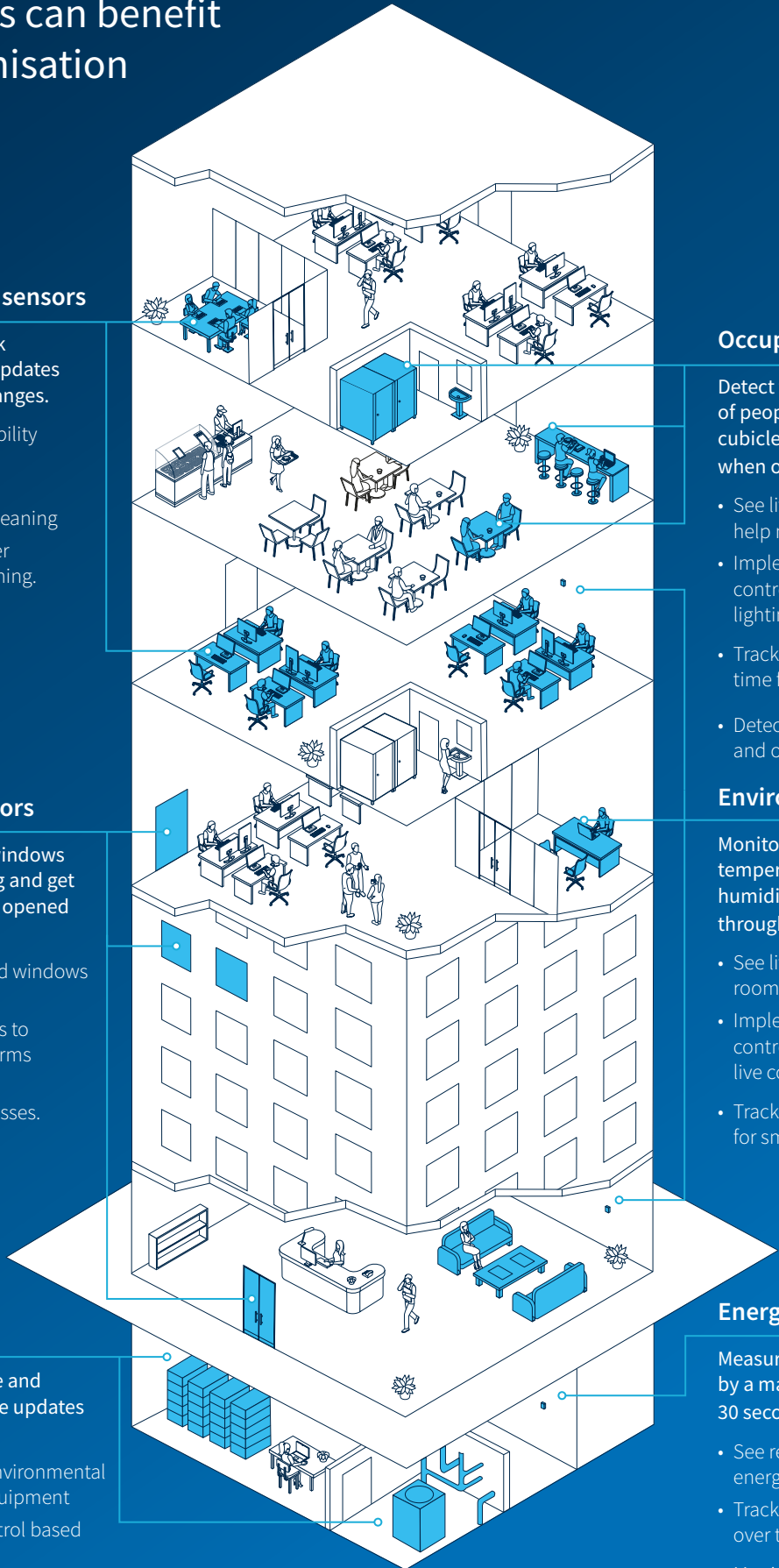
# The Pressac solution

Create a highly practical solution to the challenges presented by the new world of work by ensuring the right levels of occupancy and air quality in your organisation. And moving to the years beyond, turn your workspace into an optimally healthy, energy efficient environment that helps your organisation operate at peak performance.

Our wireless sensors are small and discreet, measuring and monitoring desks, meeting rooms, shared spaces and building assets, giving you real-time occupancy and environmental data to effectively manage space capacity and make better workplace decisions using data.

Our flexible, responsive solutions can take your organisation through the coronavirus distancing practices and beyond, into an exciting new world of agile working.

# Here are some ways our IoT sensors can benefit your organisation



## Desk occupancy sensors

Detect real-time desk occupancy and get updates when occupancy changes.

- See live desk availability and better manage desk booking
- Monitor usage for cleaning
- Track utilisation over time for space planning.

## Open/close sensors

Monitor doors and windows around your building and get alerts when they are opened or closed.

- See which doors and windows are open or closed
- Track door openings to trigger cleaning alarms
- Automate building management processes.

## Climate sensors

Monitor temperature and humidity, and get live updates when they change.

- Maintain optimal environmental conditions for IT equipment
- Optimise HVAC control based on live conditions
- Measure water temperature for Legionella

## Occupancy sensors

Detect the real-time presence of people in a zone or cubicle, and get updates when occupancy changes.

- See live occupancy to help manage space usage
- Implement demand-controlled HVAC and lighting systems
- Track utilisation over time for space planning.
- Detect people going in and out of a room

## Environment sensors

Monitor CO<sub>2</sub> levels, ambient temperature and relative humidity in each area, throughout the day.

- See live conditions in each room or zone
- Implement local HVAC controls based on live conditions
- Track conditions over time for smarter HVAC control.

## Energy sensors

Measure the current drawn by a machine or circuit, every 30 seconds.

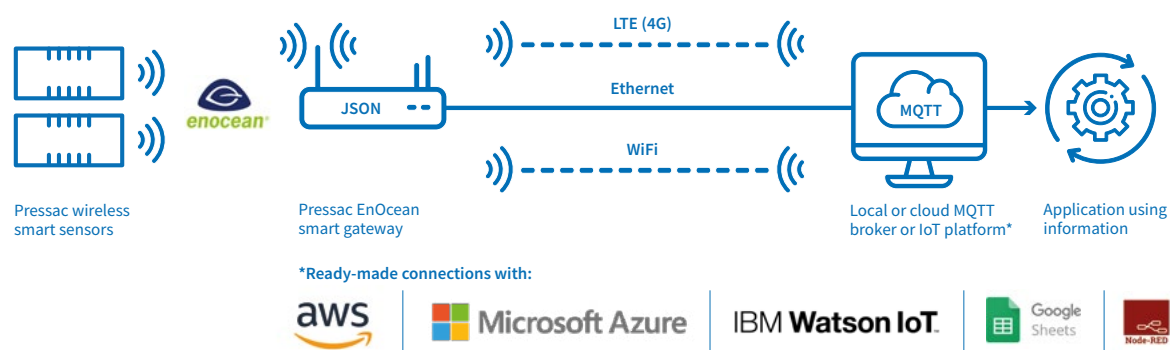
- See real-time granular energy use
- Track energy consumption over time
- Monitor changes in normal operating conditions to detect degradation and faults as they happen.

# How our smart technology works

Our technology is interoperable, so the data from our sensors can be integrated with an existing EnOcean-enabled system or integrated into any system using our smart gateway.

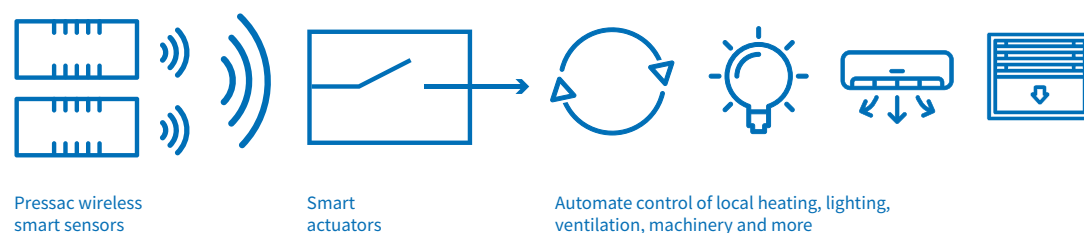
## Integrate data into any software or IoT platform

Our smart gateway receives data from our sensors, converts it into easy-to-use JSON format, then sends it securely to your chosen MQTT broker or IoT platform via ethernet, WiFi or LTE (4G), or simply send data to a Google Sheet.



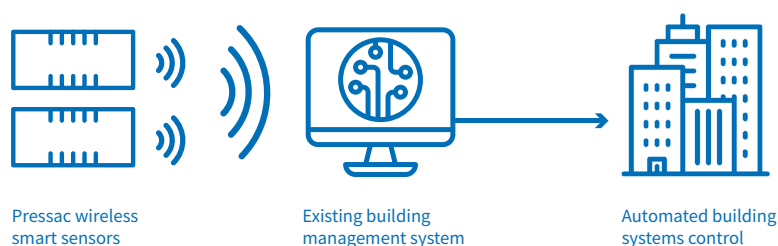
## Connect directly to smart devices

Our sensors can interact directly with actuators, allowing you to automate local control systems.



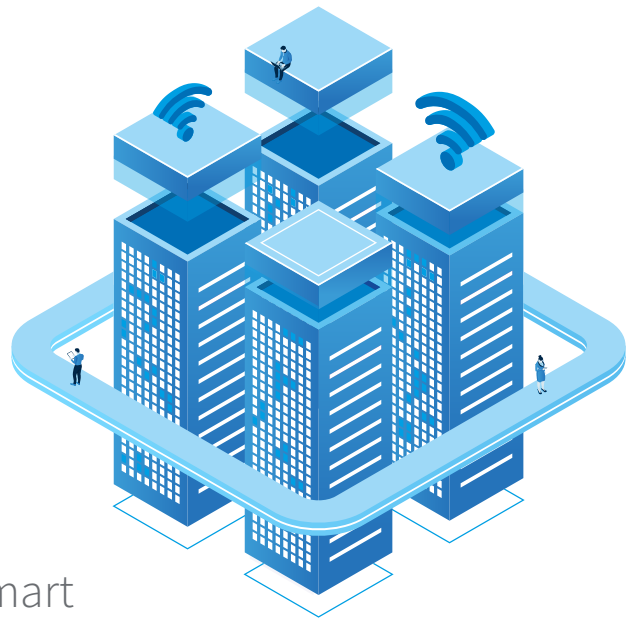
## Feed directly into existing building management systems

Sensor data can be used in systems with protocols such as Modbus, letting you monitor, control and report within an existing BMS.





# Why Pressac?



With over 60 years' experience in the smart technology industry, Pressac's smart sensors and connected technology are used in millions of businesses and homes worldwide. We design and manufacture over four million products a year, using our industry experience and expertise to create smart building solutions.

## Our sensors are:

### Easy to install

There's no need for an electrician or running cables in the wall. Our small wireless sensors simply stick onto the relevant surface – such as a desk, wall or door. Making them cost-effective and easy to retrofit into existing buildings.

### Low maintenance

Our sensors use ultra-low-power technology, so there's no need to keep replacing batteries. They're either self powered or use long-life batteries, making them environmentally friendly and highly sustainable.

### Highly robust

These are built to last, with no faulty or short lifetime products. Manufactured in the UK to high-quality and high-safety specifications, they are subject to rigorous testing procedures.

### Simple to set up, quick access to data

Our easy-set-up software enables you to label each sensor and connect securely to your cloud platform so you can quickly start feeding real-time data.

### Scalable and flexible

Our sensors use the EnOcean wireless protocol – one of the most widely used in the world. Its prevalence means it offers great interoperability, allowing you to easily add to and scale your smart systems.

### Cost effective

We manage the full lifecycle of the product, from design and prototyping to manufacturing and distribution, giving you large volume, at affordable prices and within the required timescales.

# Pressac smart building and connected technology

Pressac design and manufacture the technology that makes buildings talk. We help millions of businesses and consumers worldwide to connect their buildings and equipment to the network, enabling them to talk to applications, to each other, and to you. All in real time.

As a trusted partner to some of the world's leading companies, we've been designing and manufacturing smart technology for over 60 years. As well as off-the-shelf solutions, we also offer bespoke manufacturing in high volumes. With in-house design, development and quality-assurance experts, plus our own high-tech UK manufacturing facility, we can manage the full lifecycle of product creation, from design and prototyping to manufacture and distribution.

We partner with our customers to help deliver scalable, cost-effective, compliant solutions that offer the very best performance, flexibility and reliability.



Over 60 years' experience and technical expertise



Compliance with UK health and safety regulations



Quality and environmental management assured



5,000 sqm high-tech UK manufacturing facility

## Find out more

If you're looking for a partner who understands technology – and can offer reliable, cost-effective solutions in high volumes – get in touch.

Call us: [+44 \(0\)115 936 5200](tel:+4401159365200) Email us: [Info@pressac.com](mailto:Info@pressac.com) Visit us: [www.pressac.com](http://www.pressac.com)

